

# 021C WIND DIRECTION SENSOR

## SERVICE MAINTENANCE, REPAIR, SPARE PARTS

Met One Instruments, Inc.; 1600 NW Washington Blvd.; Grants Pass, OR. 97526  
Ph. 541-471-7111; Fax 541-471-7116; E-mail: service@metone.com

### REPAIR AND FIELD MAINTENANCE

A complete repair and service department is maintained at our factory in Grants Pass, Oregon, and at our regional service facility in Dallas, Texas. Most repairs can be made in the field by a simple substitution of components. Some repairs do require recalibration following the replacement of faulty components. If calibration standards are not available, the instrument can be returned to our service facility. The turn around time is generally less than five (5) working days.

### RETURN AUTHORIZATION

Prior to any product return, please contact the factory for a return authorization number.

### BASIC SERVICE(S)

| ORDER # | DESCRIPTION   | LIST PRICE |
|---------|---|------------|
| SVC0021 | STD SERVICE 021C SENSOR<br>Replace bearings, slinger, shield.<br>Inspection and Performance Test. Replace Bearings, Slinger,<br>and Shield. Check Starting Threshold, NIST Calibration and<br>Linearity | \$ 80.00   |
| SVC0100 | AS FOUND SENSOR TEST  | \$ 15.00   |

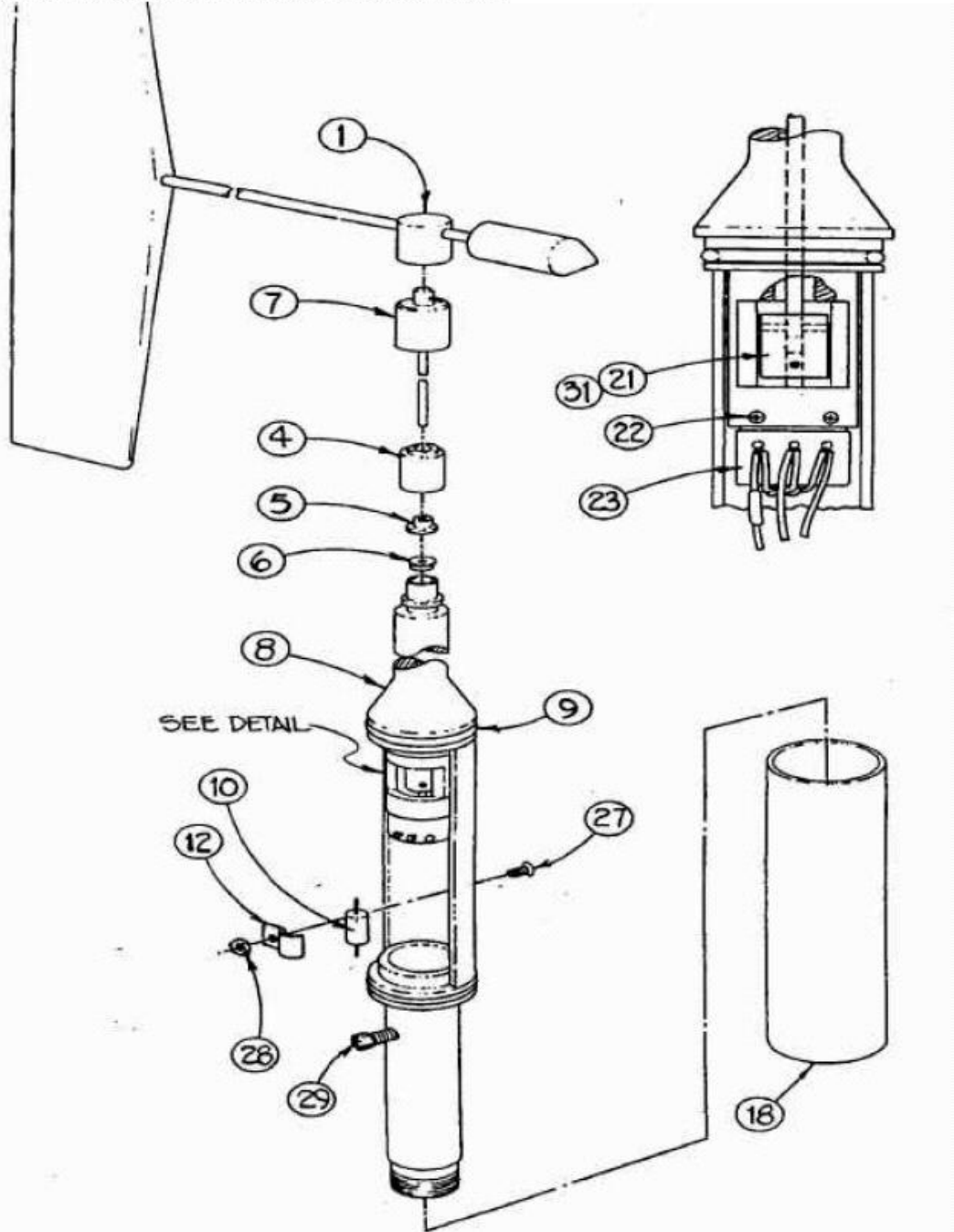
### REPLACEABLE PARTS

Note: Replacement of some of the following parts will require re-calibration of the sensor. Those replacement items that require re-calibration of the sensor are indicated with an "\*". Instructions are provided in the Product User's Manual.

| Ref# | PART # | DESCRIPTION                         | LIST PRICE |
|------|--------|-------------------------------------|------------|
| 1    | 2755   | VANE ASSEMBLY, ALUM. (020C-1)       | \$ 125.00  |
| 1    | 10296  | MAGNESIUM VANE ASSY, 020C, 021C     | \$ 125.00  |
| 4*   | 1009   | SHIELD WS/WD                        | \$ 17.00   |
| 5*   | 1010   | SLINGER WS/WD                       | \$ 16.00   |
| 6*   | 1055   | BEARING                             | \$ 15.00   |
| 7*   | 2658   | HUB/SHAFT ASSY                      | \$ 17.50   |
| 9    | 720120 | O RING                              | \$ 3.00    |
| 10   | 805080 | RES. 5W 1% 35 OHM WW                | \$ 3.00    |
| 12   | 480100 | HEATER CLAMP                        | \$ 2.00    |
| 18   | 2675   | SENSOR COVER                        | \$ 10.00   |
| 20*  | 860220 | SPACER WD / WS SHAFT                | \$ 3.00    |
| 21*  | 1862-1 | COUPLER +/-1-1/2                    | \$ 10.00   |
| 22   | 601070 | SCREW, PH 2-56 X 1/8                | \$ 0.25    |
| 23*  | 2245   | POTENTIOMETER ASSY, W/ DIODES (020) | \$ 150.00  |
| 27   | 601330 | SCREW FH 82j 4-40 X 3/8             | \$ 0.25    |
| 28   | 600400 | NUT, HEX KEP 4-40                   | \$ 0.25    |
| 29   | 601850 | SCREW, SOC. HD CAP 10-32 X 5/8      | \$ 0.25    |
| 31   | 601251 | SET SCREW 4-40 X 1/8                | \$ 1.25    |

**\*\*CONSULT FACTORY FOR CABLE PRICING**

ASSEMBLY/PARTS REFERENCE DRAWING



**MODEL 021C**  
**WIND DIRECTION SENSOR**