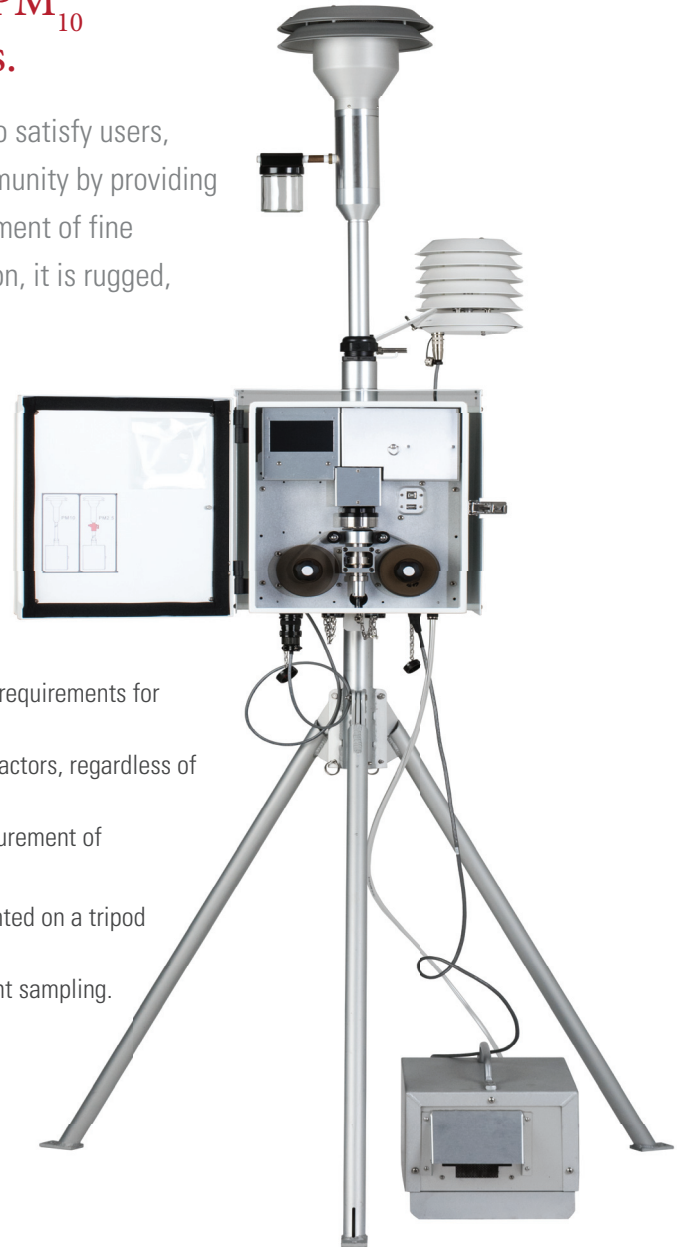
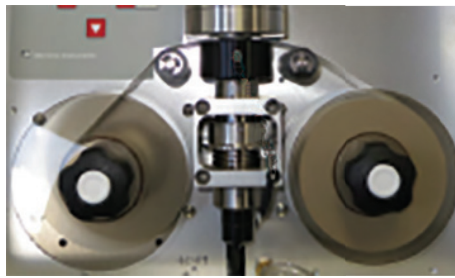


## E-BAM Plus

## The Met One E-BAM Plus is a Portable, Real-time Beta Gauge which is Comparable to U.S. EPA Methods for PM<sub>10</sub> Particulate Measurements.

The Met One E-BAM Plus has been built to satisfy users, regulators and those from the health community by providing truly accurate, precise, real time measurement of fine particulate matter automatically. In addition, it is rugged, portable, and deployable in 15 minutes.

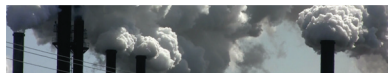


### The E-BAM Plus Offers the Following Advanced Features

- Accuracy and precision approval with U.S. EPA requirements for PM<sub>10</sub> measurement.
- Real-time, accurate results without correction factors, regardless of season or geographic location.
- True ambient sampling provides accurate measurement of semi-volatile nitrates and organic compounds.
- Lightweight, rugged construction is easily mounted on a tripod in minutes.
- All-weather construction allows for true ambient sampling.
- Operates on AC power.

### E-bam Plus is a Complete Measurement System It Comes With the Following Standard Components:

- Internal Datalogger
- External AC Vacuum Pump Standard
- Real-Time Concentration
- PM<sub>10</sub> Inlet
- Aluminum Tripod
- Temp/RH/Pressure Sensor
- Volumetric Flow Control
- Weatherproof Enclosure
- Filter Temperature Sensor
- Filter RH Sensor
- Filter Pressure Sensor
- Calibration Membrane



## Specifications

Range:	-15 mg/M <sup>3</sup> - 10,000 mg/M <sup>3</sup>
Accuracy:	Exceeds US-EPA PM <sub>10</sub> FEM Requirements
Measurement Cycle:	1 Hour
Beta Source:	C <sub>14</sub> , (Carbon 14), Half Life of 5730 years
Detector:	Photomultiplier Tube with Organic Plastic Scintillator
Analog Output:	2 Channels: Optical Isolated, Voltage Range 0-1V, 0-2.5V, 0-5V
Filter Tape:	Continuous Glass Fiber Filter
Inlet:	EPA PM <sub>10</sub> inlet
Flow Rate:	16.7 liters per minute, adjustable
Flow Accuracy:	+/- 2% of Reading, Volumetric Flow Controlled
Alarm Output:	1 Channel Dry No Contact 1A @ 125 VAC or 60 VAC Maximum
Input Power:	100 - 230 VAC; 50/60Hz; 150 W, 3A @ 115 VAC / 2A @ 230 VAC
US-EPA Designation:	EQPM-1215-226 (PM <sub>10</sub> )
Operating Temperature:	-25° Deg. C to Deg. 50° C
Enclosure:	46 cm x 41 cm x 31 cm, 34kg

### Standard Accessories

- BX-802 PM<sub>10</sub> Inlet EPA Spec.
- EX-597 Ambient RH Pressure Sensor
- 460180 Filter Tape, Roll
- COMET Software
- External Pump 115 or 230 VAC Option (Specify Medo or Gast)

### Optional Accessories

- BX-302 Zero Calibration Kit
- BX-307 Flow Calibrator
- BX-807 PM<sub>2.5</sub> Sharp-Cut Cyclone
- BX-803 TSP Inlet
- EX-MSO Wind Speed and Direction Sensor
- EX-AIO 2 Sonic Wind Speed and Direction Sensor