

ES-642 PARTICULATE MONITOR

SERVICE MAINTENANCE, REPAIR, SPARE PARTS

Met One Instruments, Inc.; 1600 NW Washington Blvd.; Grants Pass, OR. 97526
Ph. 541-471-7111; Fax 541-471-7116; E-mail: service@metone.com

REPAIR AND FIELD MAINTENANCE

This instrument must be returned to the factory for Calibration. The turn around time is generally less than fifteen (15) working days.

RETURN AUTHORIZATION

Prior to any product return, please contact the factory for a return authorization number.

BASIC SERVICE(S)

ORDER #	DESCRIPTION
SVC6086	FACTORY SERVICE & CALIBRATION, ES-642 Includes Calibration and NIST Traceable Certificate Inspect Filter, Inspect, Clean Optical Sensor, Pump and Tubing.
SVC2000	AS FOUND TEST & CERTIFICATE, E-SAMPLER, ES-642, NPM

Parts Marked with an Asterisk (*) ahead of the part number will be replaced as needed during the calibration

REPLACEABLE PARTS

PART #	DESCRIPTION
80949	ES-642 MAIN PUMP ASSEMBLY
81674	PURGE PUMP, ES-642
* 82258	DIFF PRESSURE FLOW SENSOR
80957	AMBIENT TEMPERATURE SENSOR, ES-642
9278-1	FILTER RH SENSOR
8912	PURGE FILTER HOLDER
8913	PUMP FILTER HOLDER
580302	FILTER, 0.2 MICRON PORE
580345	PUMP FILTER, 5 MICRON
720063	O-RING, FOR PURGE AND PUMP FILTER HOLDERS
80950-2	I/O BOARD, ES-642
81260	MOUNTING TABS, ES-642
80959	EXTERNAL CABLE, ES-642

* Note: 82258 requires Firmware version 1.2.0 or later. Call factory for more information.

Inlet Components

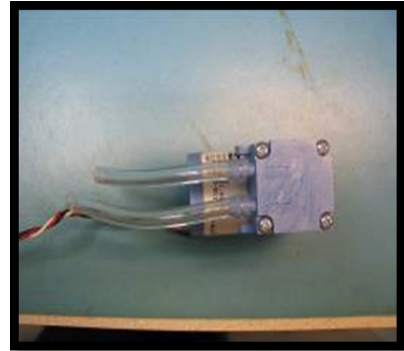
PART #	DESCRIPTION
9441	TSP INLET
SCC 111	SHARP CUT CYCLONE, PM1
SCC 110	SHARP CUT CYCLONE, PM10
SCC 112	SHARP CUT CYCLONE, PM2.5

PART IDENTIFICATION

**9278-1 FILTER
RH SENSOR**



80949 SAMPLE PUMP



80957 AMBIENT TEMP SENSOR



8912 PURGE FILTER HOLDER

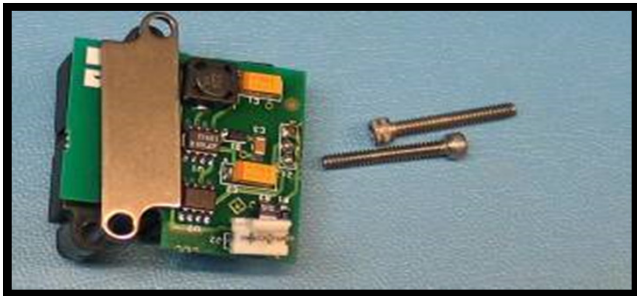
Shown with 580302 Purge Filter



8913 SAMPLE PUMP FILTER HOLDER

Shown with 580345 Pump Filter

**82258 FLOW
SENSOR**



9441 TSP INLET

SHARP CUT CYCLONE



80950-2 I/O BOARD

