

GAST PUMP REBUILD GUIDE

680828-9800 REV A



POWERED BY ACOEM

Met One Instruments, Inc.

1600 NW Washington Blvd.

Grants Pass, OR 97526

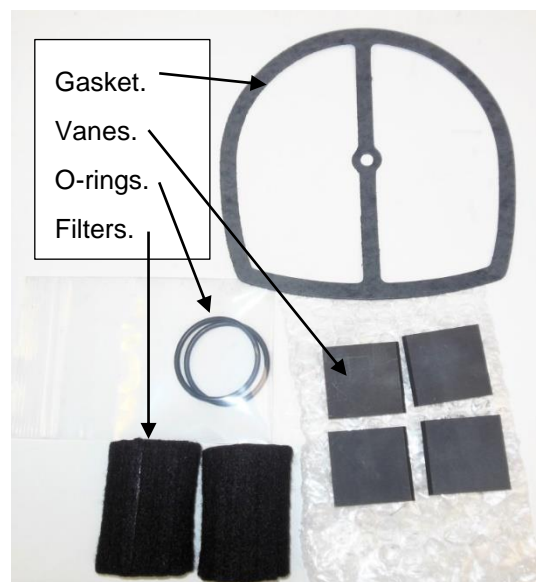
Telephone: (541) 471-7111

Facsimile: (541) 471-7116
metone.com

© Copyright 2025 Met One Instruments, Inc. All Rights Reserved worldwide. No part of this publication may be reproduced, transmitted, transcribed, stored in a retrieval system, or translated into any other language in any form without the express written permission of Met One Instruments, Inc.

Equipment required:

- GAST pump rebuild kit (P/N 680828).
- 7/16" socket wrench or nut driver.
- 3/8" socket wrench or nut driver.
- Rubber mallet or small hammer.
- Wipe down cloth.
- Torque wrench that reads in inch pounds.
- Compressor or compressed canned air.



1. Disconnect power to the pump before servicing.



2. Remove the filter end caps from the front of the pump by unthreading the filter housings. Set these aside.



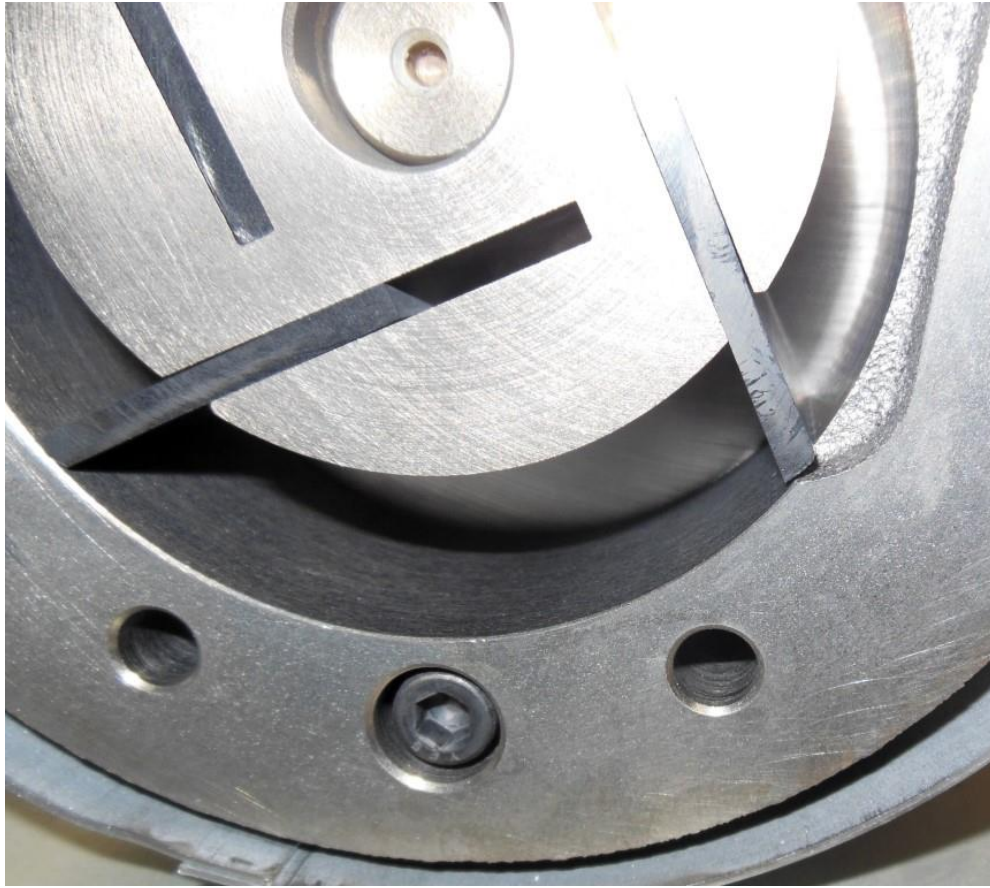
3. Remove the (5) muffer box bolts using a 7/16" combination wrench or socket wrench.



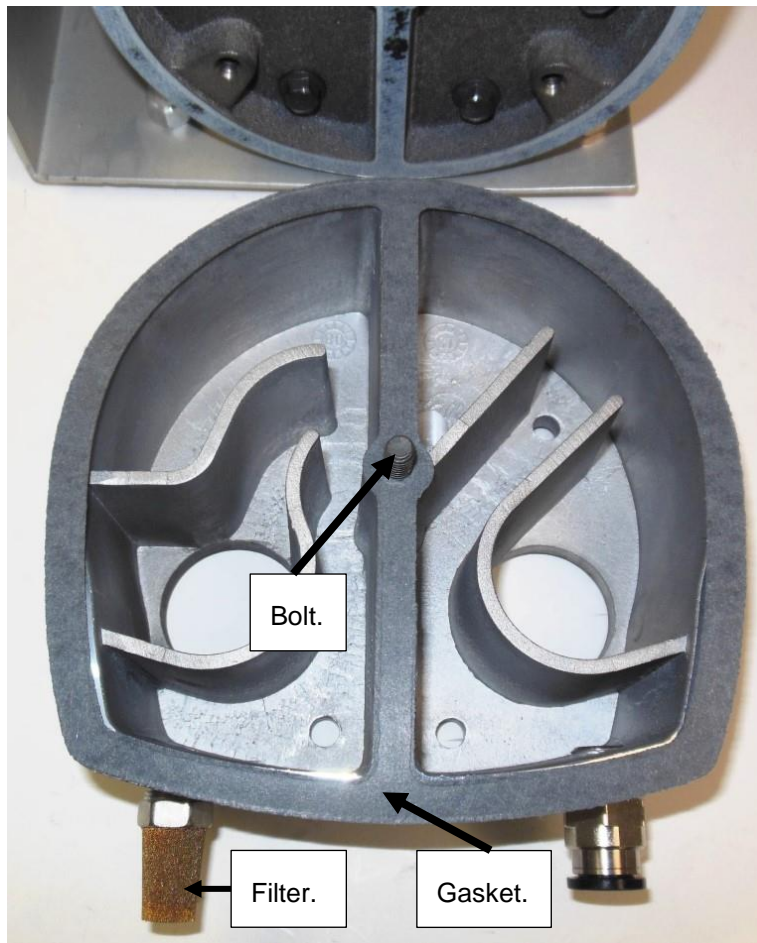
4. Use a rubber mallet or small hammer to tap on the side of the box to remove it. Do not use a screwdriver. Set this aside.



5. Using a 3/8" socket wrench, remove the (6) end plate bolts and remove the end plate.



6. Note the direction of the bevel on the vanes and remove them. Clean around the body and rotor slots.
7. Check the end plate, rotor and body for scoring. Severe scoring or worn bearings will require service at a GAST-authorized facility.
8. After cleaning, replace the vanes with the new ones from the rebuild kit, noting the same bevel direction.
9. Replace the end plate and torque the bolts to 90-120 in. lb.
10. Remove the old gasket from around the end plate.



11. Place (1) bolt through the center of the muffler box and place a new gasket from the rebuild kit aligned with the bolt as shown.
12. Place the muffler box onto the end plate and install the remaining (4) bolts. Torque the bolts to 90-120 in. lb.
13. Use compressed air to clean out the Filter/muffler and look for blockage.



14. With the end caps removed, remove the filter and O-rings and replace them with the new units from the rebuild kit.
15. Replace the filter assemblies into the pump and test the unit before installing it with your air monitor.